



Wind resource services

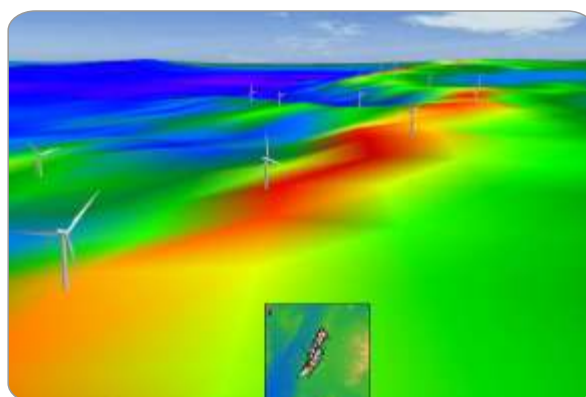
maximising wind farm potential

Wind Prospect Group has been developing, constructing and operating wind farms globally since building the UK's second wind farm in 1992.

We provide a complete range of wind services to clients around the world and have more than 100 masts under data management.

Our wind resource service includes:

- monitoring campaign advice
- wind data management
- wind resource and energy yield assessment
- site conditions assessment
- general wind resource advice and consultancy

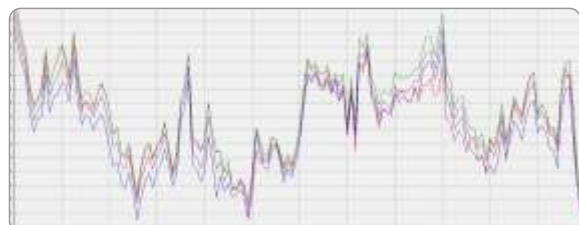


Why are wind resource analyses so important?

A comprehensive understanding of the wind resource is vital for:

- optimised wind farm layout design
- accurate energy predictions
- reduced uncertainties
- site conditions and turbine selection
- securing competitive finance

High quality measurement and analysis is the cornerstone of identifying and mitigating risks and for maximising the potential rewards from a project.



Benefits at a glance

Key benefit	Due to
Minimum client input	Comprehensive management of the measurement program, mast and equipment installation, data retrieval, analysis, and energy yield assessment
A complete service	Provision of all wind services for successful project development
Quality advice	Almost two decades' experience developing projects globally
Objective approach	Independent third party involved from the start



Maximising wind farm potential

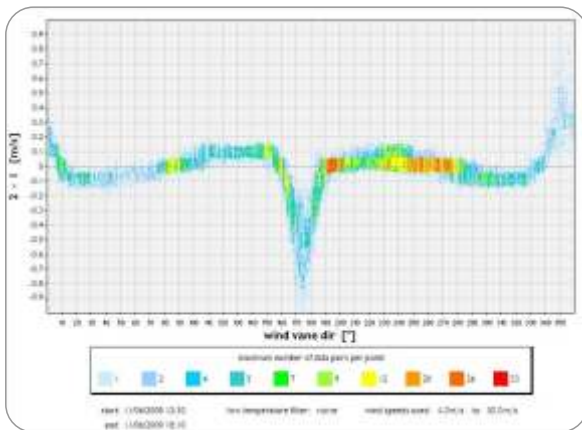
Services

Our wind data services are built on many years of knowledge and experience acquired developing our own successful wind farm projects

Wind measurement

We save you time and effort by arranging:

- location selection and permitting
- met mast installation and equipment configuration
- maintenance and inspections throughout your wind measurement campaign
- adherence to strict health and safety measures



Wind data monitoring

We provide continuous quality data monitoring via daily downloads, screening and quality checks.

You stay in control as we notify you of anomalies, errors or missing data.

We recommend on required actions to maximise data availability and to maintain quality and consistency.

We keep you informed via comprehensive monthly reports that include:

- monthly wind speed distributions
- wind shear and turbulence
- data logger condition
- summary of recommended actions

Visit us online at windprospect.com
windservices@windprospect.com

Wind resource analysis

We convert your data into useful information by combining it with high quality external sources to provide:

- analysis of site measured data
- selection and review of reference data
- correlations based on measured mast data and long term data sets
- long-term wind regimes for the site
- wind shear intensity analysis at the mast location

Energy yield assessments

We distill your information to produce:

- wind flow calculations (using WASP / CFD)
- micrositing and energy predictions for turbines and their wakes
- optimisation and comprehensive assessment of losses and uncertainties
- calculation of overall energy yield values

Site conditions assessment

Finally we provide you with quality predictions in line with international best practice. These determine:

- mean wind speed
- turbulence intensity
- extreme wind conditions
- site wind shear

We then advise on the wind turbines and site design that will maximise on your investment.

